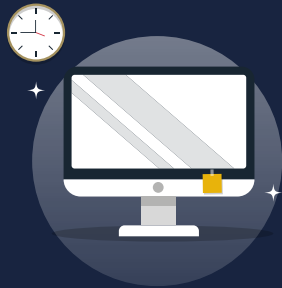


REDDAM HOUSE CONSTANTIA

FAQs

01 WHY REDDAM HOUSE?

We guide students to become happy and successful in a changing world. Students are respected and nurtured in a caring environment. We provide opportunities to explore and identify individual talents in a myriad of areas outside of the academic curriculum. In addition, we offer a global perspective, preparing students for the future.

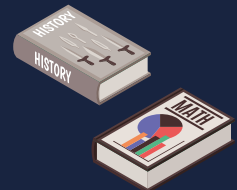


02 HOW DO I APPLY?

You can contact our admissions officer, who will guide you through the process or apply online today.

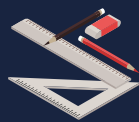
03 WHICH PILLARS FORM THE FOUNDATION OF YOUR APPROACH TO EDUCATION?

Cultural, Academic and Sporting disciplines as well as humanitarian endeavours (which are instilled from Stage 1). We have a 'We shall give back' initiative each term.



04 ARE THERE ANY REMEDIAL LEARNING PRACTICES?

We offer Occupational Therapy, Physiotherapy and Speech Therapy on campus, as well as Enrichment classes which stimulate lateral thinking.



05 WHAT ARE SOME OF THE BENEFITS OF BEING AN INSPIRED SCHOOL?

Inspired is a leading global premium schools group educating over 45,000 students across an international network of over 64 schools on 5 continents. As an Inspired school, Reddam House Constantia benefits from access to global educational best practices, global exchanges and exclusive international partnerships.

EARLY LEARNING SCHOOL

01 DO YOU HAVE A CURRICULUM IN PLACE?

We follow the Reggio Inspired approach, which offers a child-centric form of education through play. This includes uncluttered classrooms, that allow for a calm, stress free learning environment. In addition, it includes the use of natural resources to allow the child to play meaningfully within their environment and inform their learning through discovery.

02 WHICH SPECIALIST INTERVENTION DO YOU OFFER?

In Stage 1 and Stage 2 - Music

In Stage 3 - Music, Sport, Swimming

In Stage 4 - Singapore Mathematics, Muscle Mania and fine motor skills programme (run by Occupational Therapists in the classrooms to promote fine motor skills, motor planning and visual motor integration)

Swimming, Music and Sporting Skills

In Stage 5 - Singapore Mathematics, Jolly Phonics and Muscle Mania

03 WHAT IS THE STAGE 1 PROGRAMME?

Our teachers are guided by the needs of the individual learners and their sleep times are considered. This pertains to if and when there is a request for the child to sleep. This is permitted during the morning programme or at Adventure Zone in afternoon, so as not to disturb your child's sleep routines at home.

04 IS ADVENTURE ZONE INCLUDED IN SCHOOL FEES?

For Stage 1 - 3, adventure zone is part of the school fee structure and operates until 3pm. Thereafter there is a fee. There is also an optional paid Kauai lunch.

For Stage 4 and above adventure zone is fully included in the school fee structure and it is open until 5:30. A meal from Kauai is also included.

05 WHAT IS THE MAXIMUM CLASS SIZE?

Stage 1 - 18 | Stage 2 - 20 | Stage 3 - 20 | Stage 4 - 22 | Stage 5 - 24

PREPARATORY SCHOOL & COLLEGE

01 WHAT TIME DOES SCHOOL START?

Grades 1-3 start at 8:15 | Grades 4-6 start at 8:00 | Grade 7 starts at 7:45

02 WHAT IS THE TEACHER-STUDENT RATIO?

1 to 13 (including specialist staff)

03 WHAT ACADEMIC CURRICULUM IS OFFERED?

Staff build curriculum to cater for the needs of their students each year. We consult with international best practice when developing our work schedules for the year. We use a complementary approach in our teaching of Mathematics - CAPS is complemented by the Singapore Maths Approach and we actively teach SM Problem-Solving Strategies.

04 HOW IS TECHNOLOGY INTEGRATED INTO THE CURRICULUM?

We are a Google School. Students in Grade 6 & 7 use Google classroom extensively. Each student at this level requires an ipad. In lower grades, ipad banks are available to enrich learning. 2 computer labs are used to teach digital literacy and citizenship, coding and robotics.

05 IS THERE BEFORE AND AFTER SCHOOL SUPERVISION?

Yes, Holding Class is available for Grade 1-3 students, before and immediately after school (30 minutes).

06 WHAT IS THE SCHOOL'S APPROACH TO DISCIPLINE AND BULLYING?

We have a positive discipline approach to discipline. We teach students to live by 3 core values (self-control, respect and responsibility). We have zero tolerance for any hurtful behavior.

07 WHY DO YOU FOLLOW THE IEB CURRICULUM?

This is the preeminent curriculum in South Africa. A greater focus is placed on critical thinking. It is led by an organisation of integrity and administration excellence, that grows the individual and differentiates them from the majority. It also eases their transition into the work-place.

GENERAL

01 WHICH SPECIALIST SUBJECTS DO YOU OFFER?

We offer Music, Art, Creative-movement, Drama, Sporting Skills, Swimming and Computers.

02 WHY CHOOSE A CO-EDUCATIONAL ENVIRONMENT?

Students are well-equipped when immersed in real life situations. A co-educational environment offers a thorough social education, by mirroring the world around us.

03 DOES THE SCHOOL FOLLOW A SPECIFIC RELIGION?

Reddam House is a non-denominational school. We do however offer a selection of Bible Studies, Jewish Studies or Moral Studies on a Friday morning. There is a tolerance and understanding of the different faiths throughout the school.

04 IS THERE A HOLIDAY PROGRAMME?

Yes, this is offered to all children at with an additional cost in March, June/ July and September holidays. Adventure Zone is open until 5pm.

05 CAN STUDENTS TRANSFER BETWEEN RH/INSPIRED SCHOOLS?

Within South Africa, yes. International transfers are not at this stage available. However, the inspired group offers international exchanges for a global experience.

06 WHAT IS YOUR BOY-GIRL RATIO PER GRADE?

This varies and is dependent on intake - we aim to keep the ratio balanced.

07 WHICH SPORTING ACTIVITIES ARE OFFERED TO STUDENTS?

Swimming, Hockey, Tennis, Water polo, Squash, Cross Country, Equestrian, Surf Club, Football and Golf Academy, as well as Chess for both girls and boys. Rugby and cricket for boys. Netball for girls.

08 DO YOU HAVE A COMMUNITY SERVICE PROGRAMME?

Reddam House exposes students to real life opportunities - we believe that each one of us has a responsibility to give back which is instilled in our students from Stage 1. Our programme includes social and environmental projects.

09 WHICH SPORTS DO YOU EXCEL IN?

Our Waterpolo programme has excelled over the years, which has supported a purposeful drive to broaden our areas of sporting excellence. We offer world class structures included in our ethos, coaching, and facilities. Football, Netball and Hockey are all on the rise to developing sports stars.

